

ASHA

ENCLAVE

2&3 BHK Luxurious Apartments
& Commercial Spaces



“ YOUR **DREAM** HOME...
YOUR **DREAM** PLACE...
A **DREAM** LIFESTYLE...
A **DREAM** BUSINESS...”



GROUND FLOOR LAYOUT



ASHA
ENCLAVE

2&3 BHK Luxurious Apartments
& Commercial Spaces

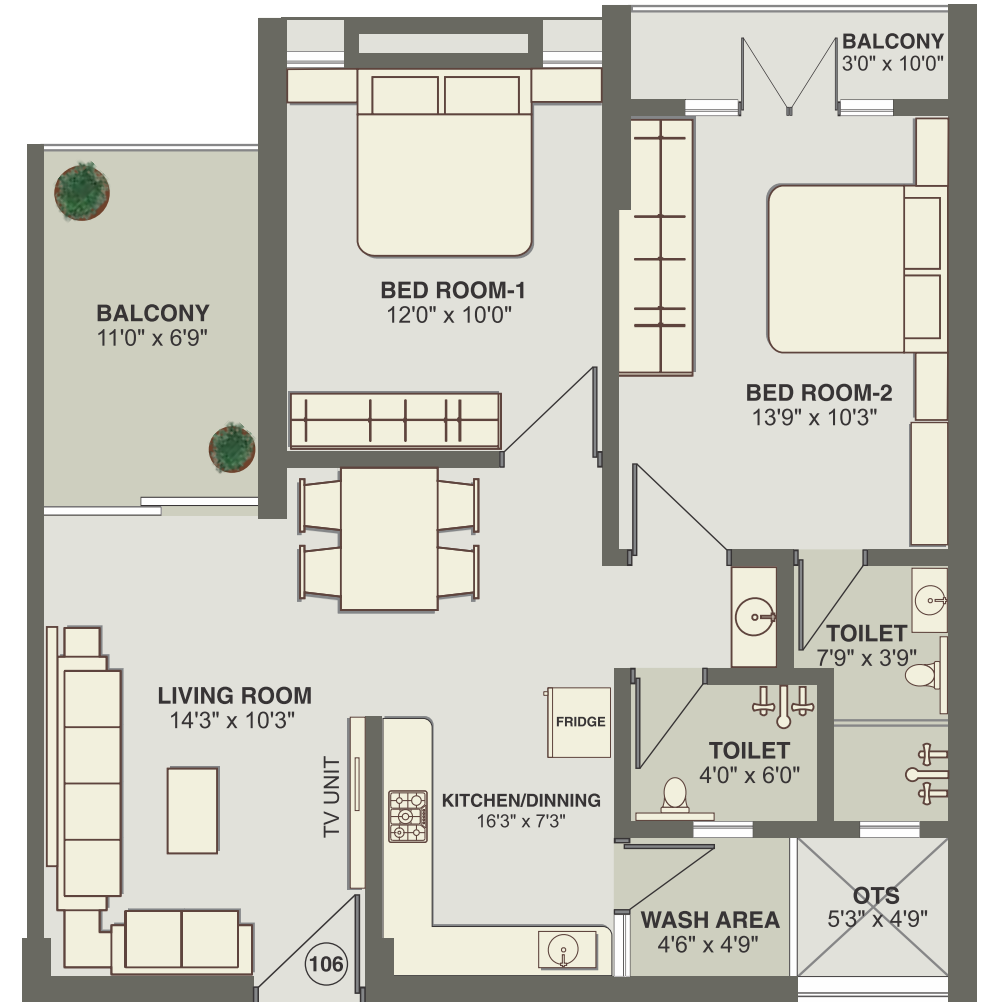


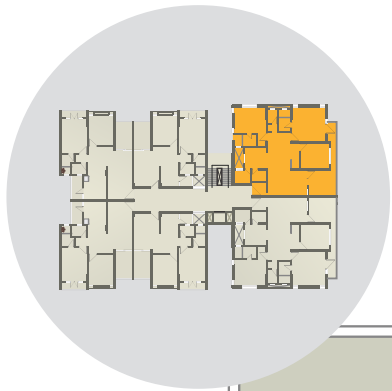


2 BHK FLAT

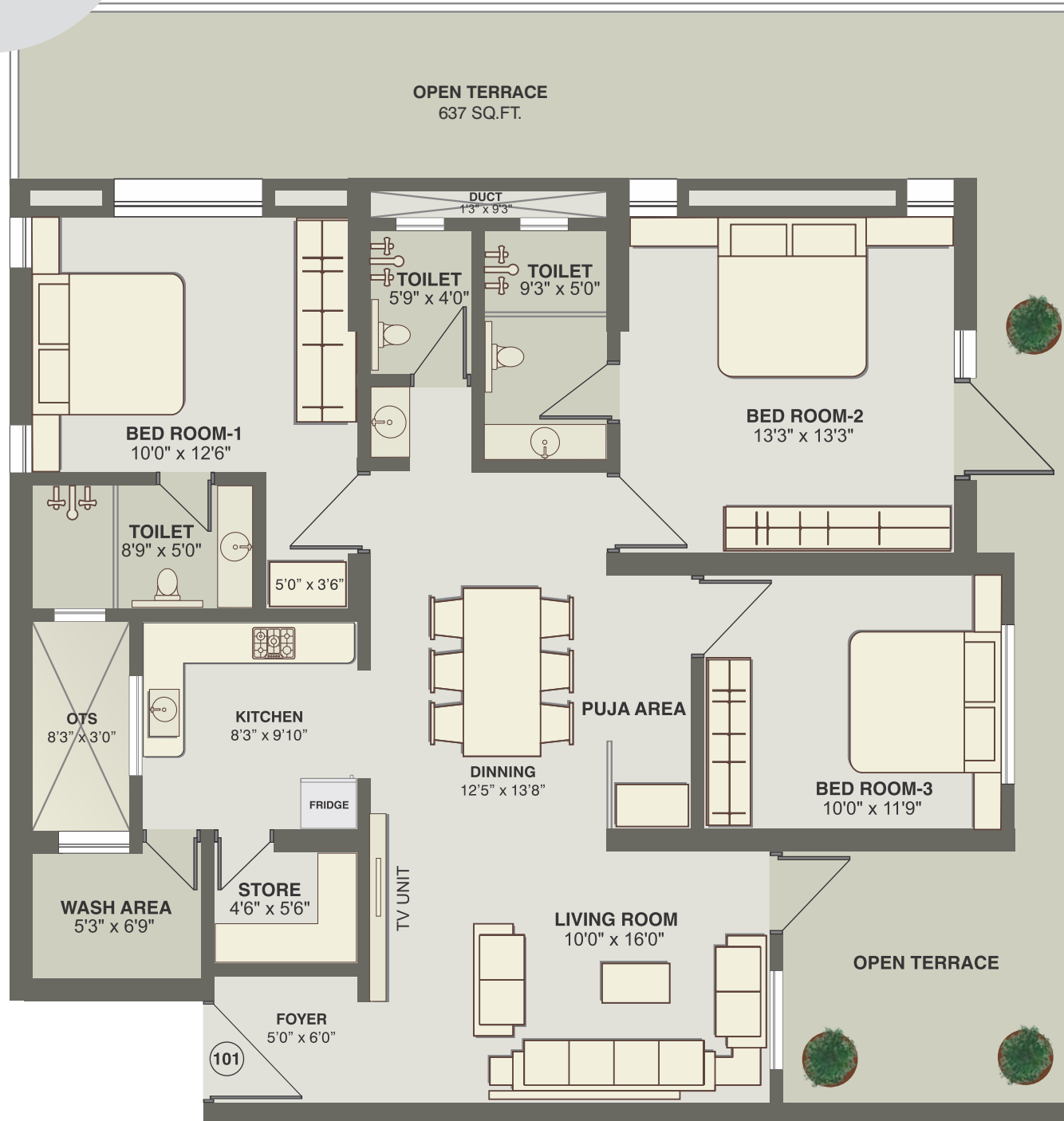


2 BHK FLAT





3 BHK FLAT



FIRST FLOOR LAYOUT

ASHA
ENCLAVE

2&3 BHK Luxurious Apartments
& Commercial Spaces

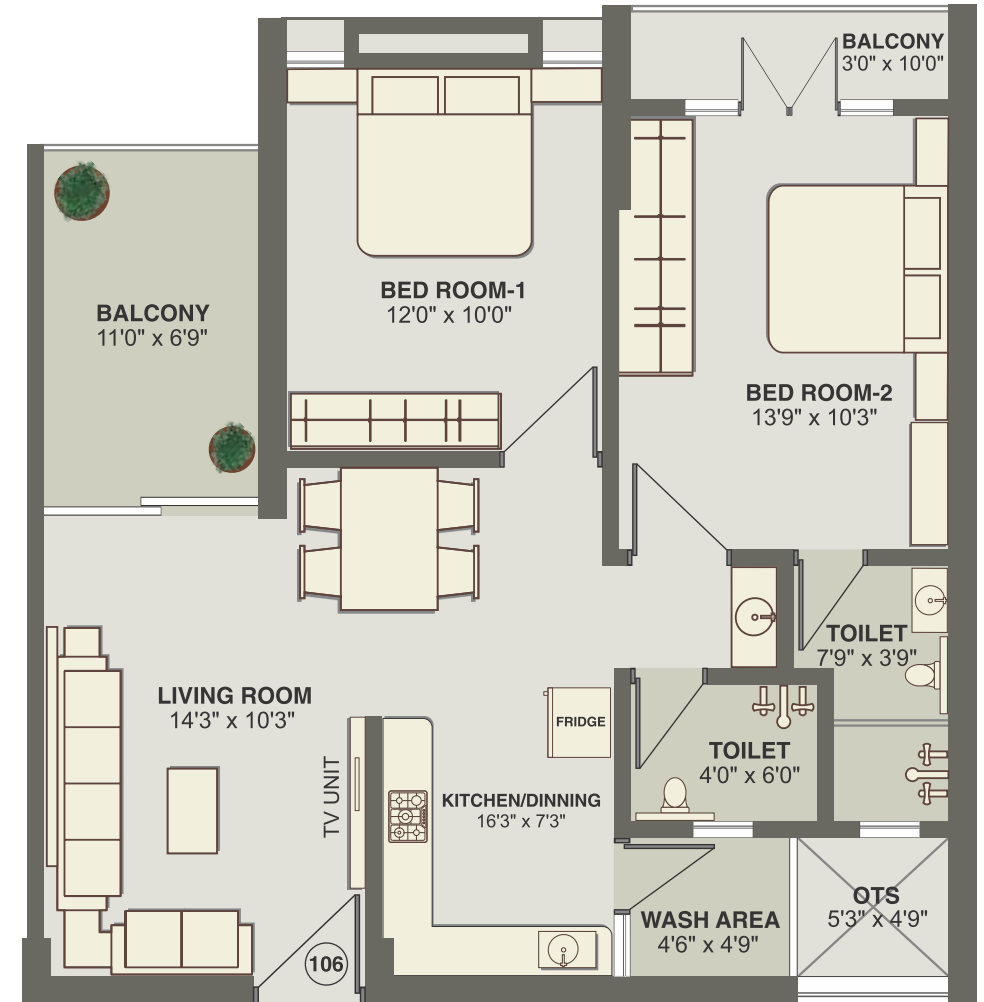


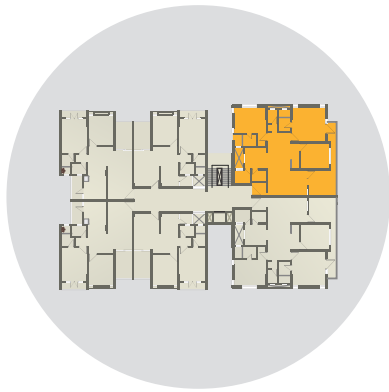


2 BHK FLAT



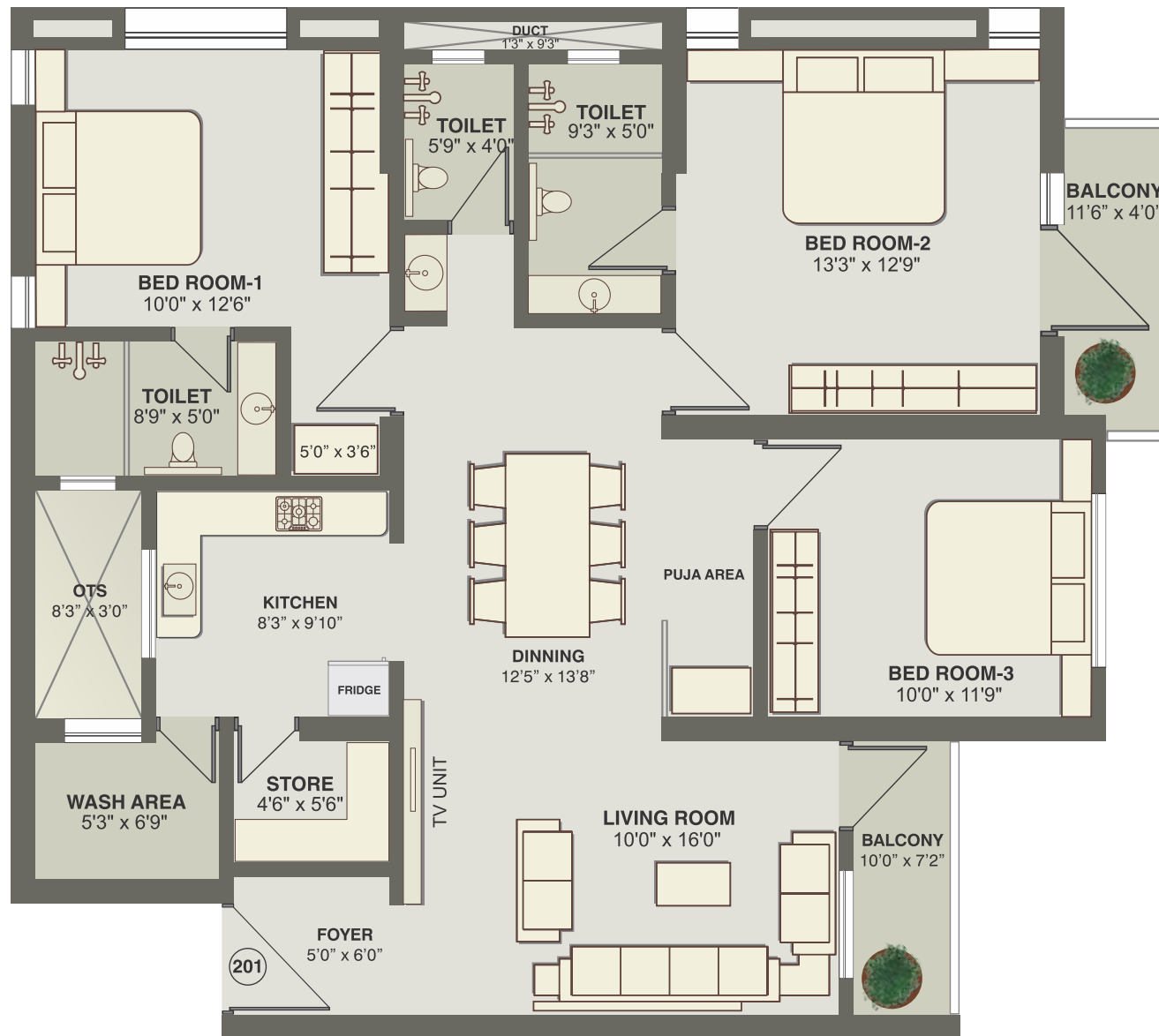
2 BHK FLAT





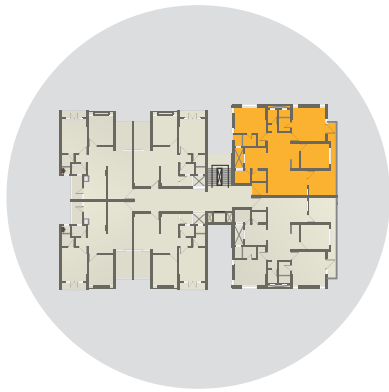
3 BHK FLAT

SECOND FLOOR THIRD FLOOR FOURTH FLOOR LAYOUT

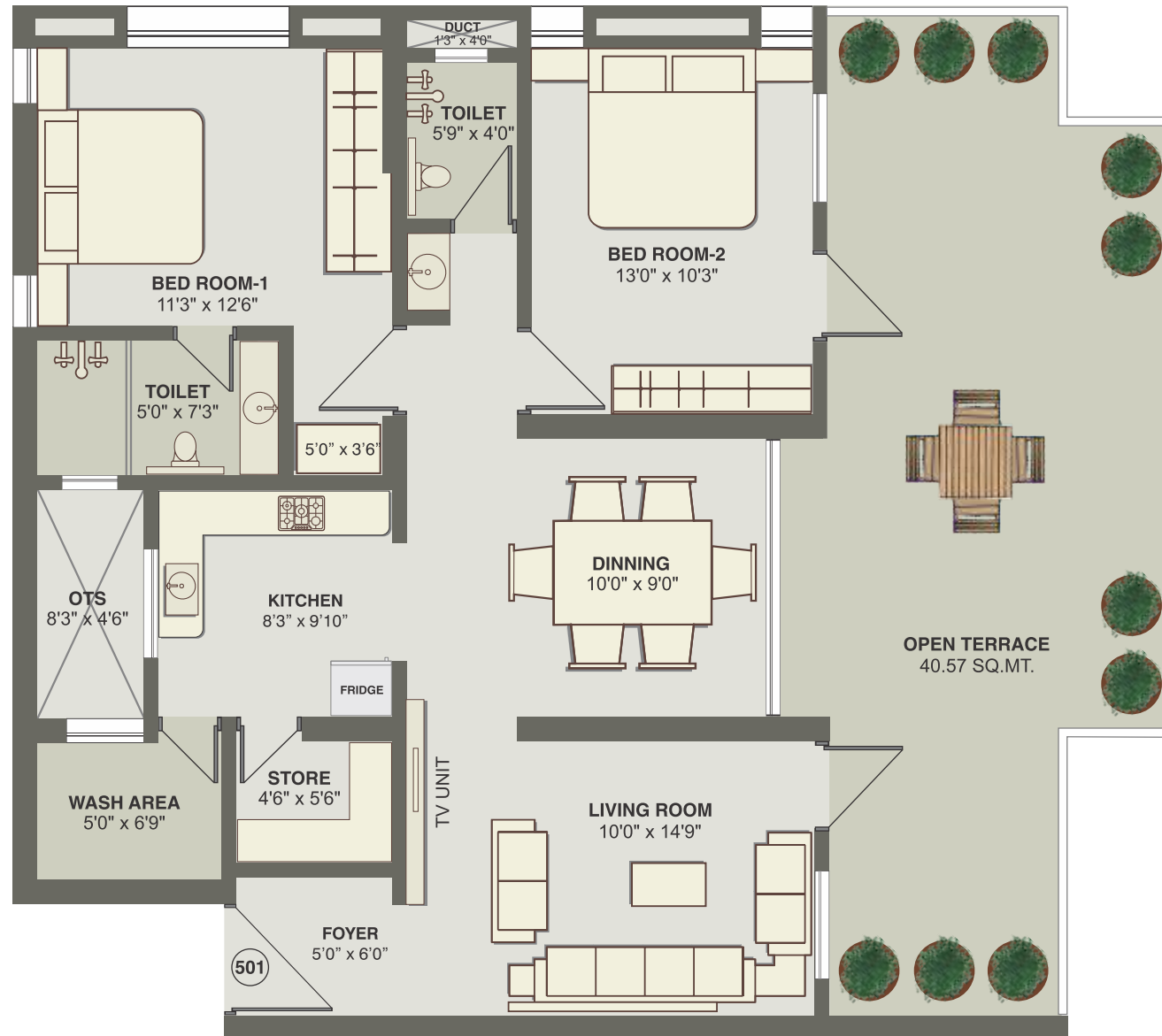


2&3 BHK Luxurious Apartments
& Commercial Spaces





2 BHK PENTHOUSE



FIFTH FLOOR LAYOUT

ASHA
ENCLAVE

2&3 BHK Luxurious Apartments
& Commercial Spaces



Amenities



Features:

Vastu friendly design | Equipped with fire safety | Anti-termite treatment on ground floor | More than 70% open space
Two high speed elevators | Internal RCC/Paver blocks roads with proper lighting | 24 hours water supply

Specifications

Structure:

RCC framed earthquake resistant structural design as per Structural Consultant/Engineers design.

Walls:

All internal walls will be finished with putty over mala plaster.

All external walls will be finished with double-coat sand face plaster.

Doors and Windows:

Door: Decorative wooden laminated with double side lamination and all doors will be provided with Granite frames.

Window: Aluminum powder coated sliding windows.

Flooring:

Vitrified tiles flooring in all rooms.

Terrace:

Terrace with three waterproofing layer and China mosaic for heat reflection.

Electricals:

Cooper flexible wiring with adequate number of electrical points and branded modular switches in all rooms.

TV and Telephone points in drawing room.

Centralized distribution boards with MCBS for safety and protection.

Kitchen:

Granite finished Platform with SS sink, Designer Glazed tiles dado upto Lintel level.

Toilet:

Elegantly designed toilets with designer tiles upto lintel level and branded sanitary ware in all toilets.

Shower facility and Geyser points in every toilet.

Plumbing:

Concealed plumbing with high standard pipe fitting and with center points premium quality CP fittings for continuous water supply.

Common bore and overhead water tank also provided.

Terms & Conditions

1. The Following will be charged extra in advance/as per government norms: (a) Stamp Duty & Registration Charges, (b) Service Tax (as actual), VAT or any such additional government taxes if applicable in future, (c) Maintenance Deposit, (d) MGVCCL Charges & Development Charges.

2. If any new tax applicable by Central or State Government in future, it will be borne by the buyers/members.

3. Possession will be given only after one month of settlement of all accounts.

4. Continuous default in payments leads to cancellation. The developers reserve all the rights to change the plan, elevation, specification or any details will be binding to all.

5. In case of delay in water supply, light connection, drainage work by the concerned authority, developers will not be responsible.

6. Changes in any structural design & changes in any external facade will NOT be permitted under any circumstances.

7. Internal changes will only be permitted with prior permission.

8. Outdoor AC units will be fitted as per provision provided in the designated place by the architect.

9. Terrace rights, Any balance FSI at present or in future shall be availed by the developer and no member would claim any right for the same.

Payment Modes

25% - At the time of Booking

10% - Third Floor Slab

10% - Plinth Level

10% - Fourth Floor Slab

10% - Ground Floor Slab Level

10% - Fifth Floor Slab

10% - First Floor Slab

05% - Finishing Level

10% - Second Floor Slab

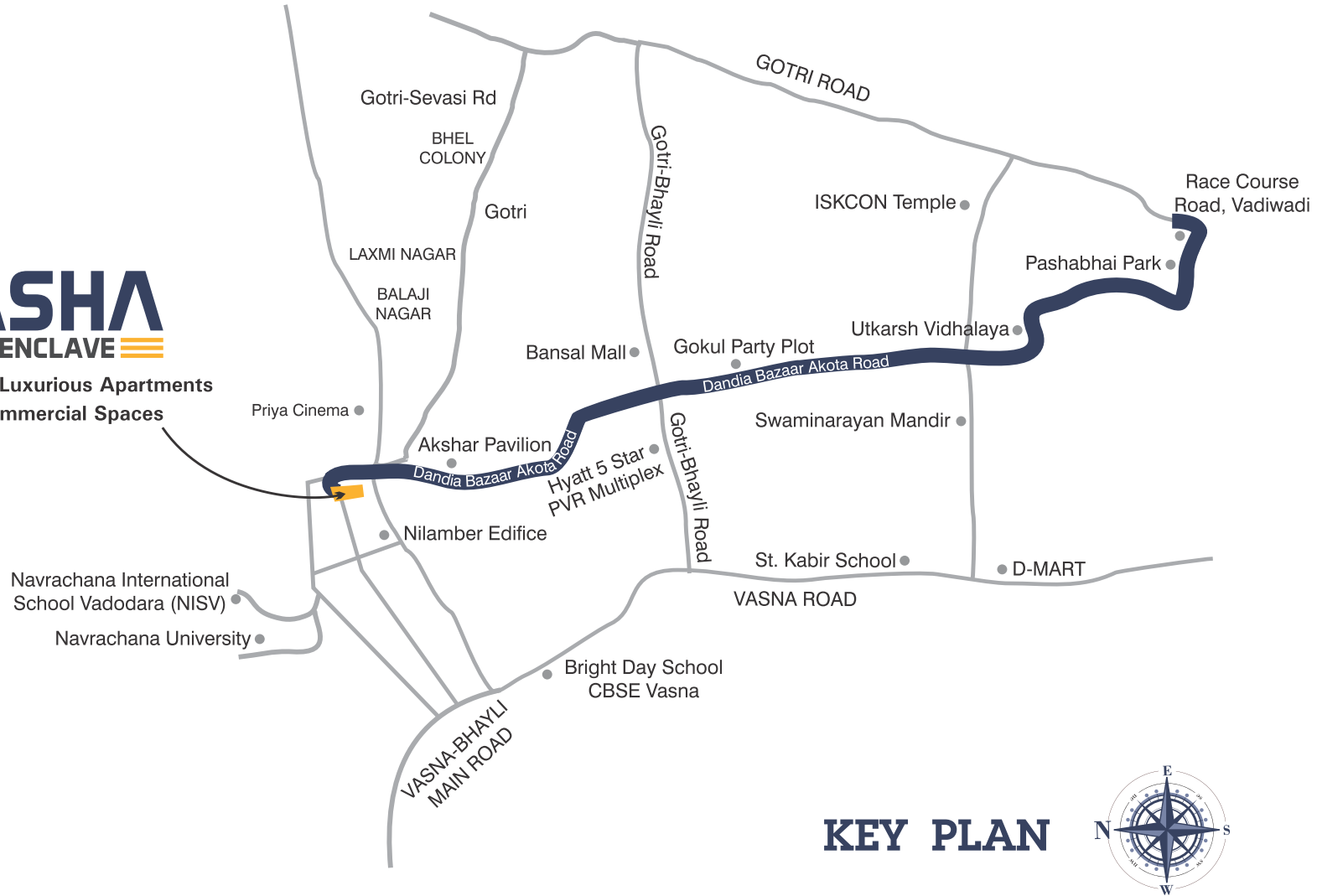
ASHA
ENCLAVE
2&3 BHK Luxurious Apartments
& Commercial Spaces

HERO HONDA | the zip yard | SAMSUNG | Deal Day India | SAVAGE | cityCenter RESTAURANT | G | FASHION INSTITUTE

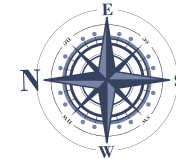




2&3 BHK Luxurious Apartments
& Commercial Spaces



KEY PLAN



Site Address: Asha Enclave, Near Priya Cinema Cross Road, Dandia Bazaar-Akota Road, Bhayli, Vadodara.

Phone: +91 95120 61100 | +91 99789 48105

Email: ashaenclave@gmail.com

Architects: Anil Shah, Nirav Shah (Inside Outside)

Structural Consultants: Dhrumesh Shah (Adstruct Consulting Engineering)

Disclaimer:

•The information contained in this brochure is subject to change as may be approved by the competent authorities and cannot form part of any form or contract. •All plans are subject to any amendments approved by the competent authorities. •This brochure shall not be treated as a legal document; it is only for the purpose of information. •The areas are indicative only. The measurements indicated in the plan may vary at the time of construction. •All landscaping is conceptual and shall be as per architect's design. Illustration in the brochure are artist impressions and serve only to give an approximate idea of the project. While every reasonable care has been taken in providing this information, the developers cannot be held responsible for any inaccuracy. •The developers reserve all the rights to make any changes as may be necessitated from time to time in the layout building plan and specifications without any prior notice, such changes would be binding to all members.